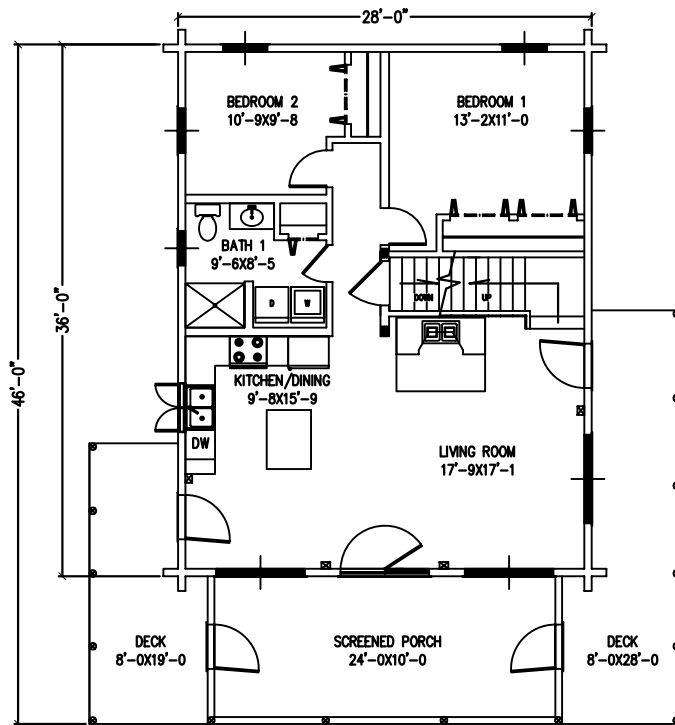
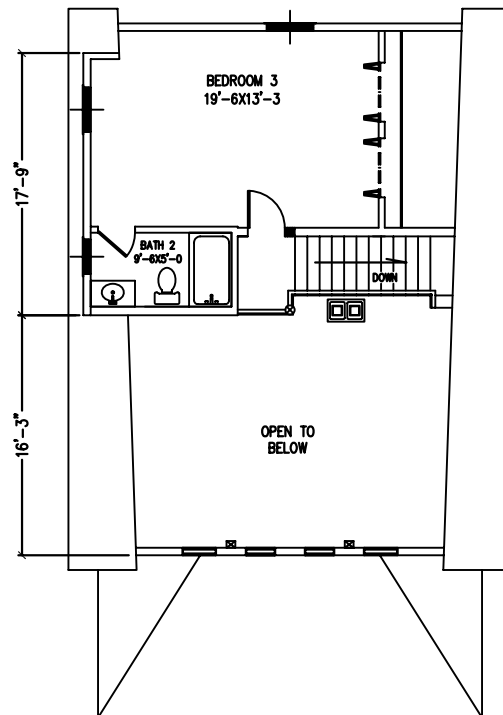




Ready To Go-  
Pick Your Colors!



FIRST FLOOR PLAN



SECOND FLOOR PLAN

Enjoy gorgeous views of Shawnee Peak and privacy galore. Convenient to skiing, snowmobiling, snowshoeing, swimming, fishing, leaf peeping and many more activities to take advantage of in the beautiful state of Maine- a 4-season recreational destination.

This 1530 sq. ft. chalet style design makes a perfect home or vacation retreat. Features include a spacious great room with a full gable end of glass, an exposed-beam cathedral ceiling and a full farmer's porch with wrap around deck. The daylight basement offers additional possibilities for more living space. You'll find quality components such as Eagle windows & doors, architectural shingles, pine cabinets w/granite counters, solid pine interior doors and an all-wood interior (walls and finish flooring) in Moose Creek's package.

A nonrefundable deposit and an agreement to purchase between Moose Creek Home Center, Inc. and Rick and Kevin Lewis, Inc. (builder) must be completed by April 30, 2011 to qualify. The first delivery must be taken within 90 days of signing a contract. Moose Creek Home Center, Inc. reserves the right to discontinue this special offer at anytime. Any nonstructural minor floor plan deviations are between you and your contractor(s). Moose Creek's drawings and materials are fixed.

Turnkey Package Including Land

Lot A- \$334,345

Lot B- \$309,845

\*\*\*\*Only two home/land packages available\*\*\*\*

This offer is valid only until April 30, 2011.

# This "Turnkey" package includes the following:

## Log Home Material Specifications- 28X36 Chalet

### Daylight Materials

Pressure- Treated Sill & Sill Sealer  
Exterior Framing & Header Materials  
Exterior Sheathing & House Wrap  
Pine Log Siding & Trim

### Foundation Capping Materials

Lally Columns  
Press-Treated Sill, Shims & Sill Sealer  
Carrying Timber w/Plywood Spacer  
Floor Joists, Solid Bridging & Hangers  
Construction Adhesive  
Inner & Outer Box Sill  
3/4" Advantech Sub-floor  
2 Courses Pine Log Siding Skirt  
Cellar Stair Materials

### Exterior Log Walls & Accessories

6x8 Pine Logs 14 Rows & Gables  
Log Home Sealant Adhesive  
PVC Foam Sealant  
Log Screws  
1/2" Splines for Logs

### Interior Wall Framing

Structural Wall Framing & Stiffeners  
Interior & Plumbing Wall Framing  
Lag Bolts & Washers

### Second Floor Beams & Flooring

Pine Ceiling Carrying Girder  
Temporary Stair Material  
Pine Joists  
Lag Bolts for End Joists & Tie Plates  
Pine Finish Ceiling  
Sound Barrier  
Pine Finish Floor

### Dormer Materials

Exterior Framing & Header Materials  
Exterior Sheathing & House Wrap  
Pine Log Siding & Trim

### Roof Framing

Pine Rafters- House & Porch  
Pine Roof Boarding  
Aluminum Flashing  
4x12 Pine Ridgepole with 1' Rakes  
5" Polyiso Insulation & Foil Tape  
Eave Nailer  
Roof Strapping  
Panel Screws for Insulation  
Eave Vent  
5/8" Advantech Roof Sheathing & Clips  
Pine Roof Trim

### Interior Wall Finish Material

Pine V-Match Finish Ceiling Material  
Pine V-Match Interior Wall Finish Material  
Pine Closet Door Jamb Material  
Pine Interior Trim Material  
Partition & Dormer Insulation  
Pine Railings & Balusters  
SYP Treads & Risers  
Pine Window & Door Trim

### Porch Materials

Press-Treated Posts & Box Sill  
Press-Treated Floor Joists & Hangers  
Pressure Treated Decking  
Porch Posts  
Log Rails, Balusters and Newels  
Pine Porch Header Material  
Screen Doors & Hardware

### Roof Covering & Accessories

Architectural Shingles  
Ridge Vent  
Roof Flashing  
Ice & Water Shield- Entire Roof

### Eagle Exterior Doors & Windows

Standard Exterior Color, Pine Interior with Low E,  
Screens (windows only), & no grilles  
Door Threshold  
Entry Locksets & Deadbolts  
Door & Window Bucks  
Pine Door & Window Trim  
Low Expanding Foam Insulation  
Window & Door Tape  
Pine Exterior Window & Door Trim

### Interior and Closet Doors

6 Panel Pine Pre-hung Doors  
Pine Paneled Bifold Doors  
Closet Rod, Bracket, & Pine Shelf  
Interior Locksets

### Kitchen & Bath Cabinetry & Countertops

Pine Raised Panel w/Granite Counters

### Finish Flooring

Pine Finish Floor  
Construction Adhesive

### Nail Allowance- Provided by Builder

### Interior & Exterior Finishes

Exterior Wood Preservative  
Interior Clear Finish

## Land & Construction Specifications:

- Land- Choose From Two Lots- Bridgton, ME
- Excavation, Underground Power, Full Foundation, Septic, Well/Pump, 2 Flue Brick Masonry
- Construction Cost Completed- Interior & Exterior
- Sanding & Sealing (materials for interior walls, ceilings, & exterior included in package)
- Heating System- Hot Water Baseboard
- Electrical & Light Fixtures
- Plumbing & Fixtures (sinks, toilets, etc)